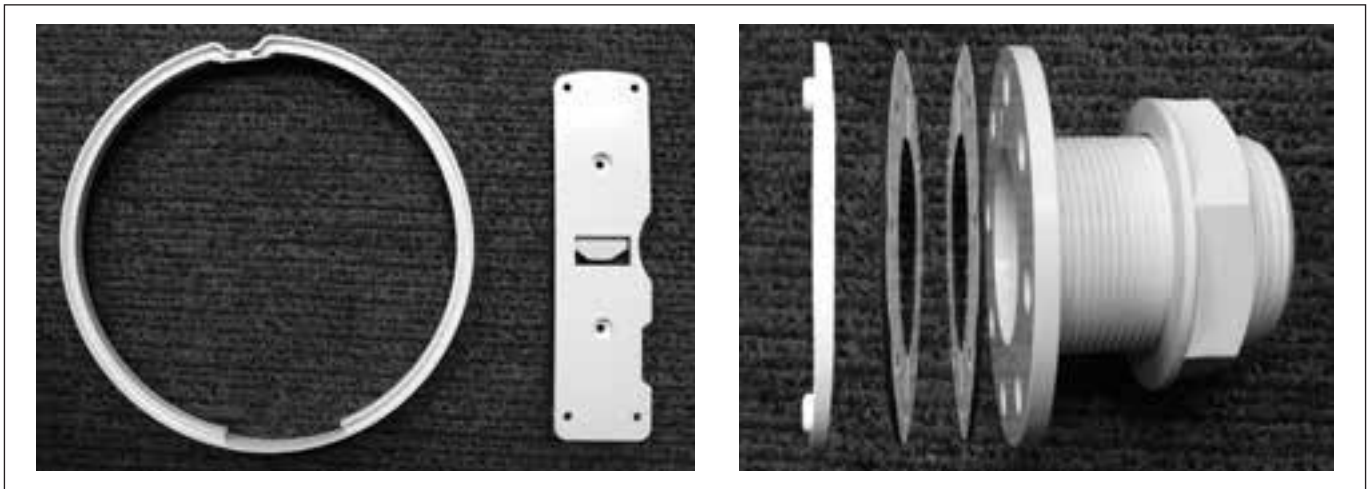


MOUNTING KIT FOR **BRITESTREAM** INGROUND VINYL POOLS

Installation Instructions for Inground Vinyl Pools

PRODUCT

266020 – BriteStream Inground Vinyl Pools Mounting Kit.



This mounting Kit is used for fitting the following Underwater LED Lights:

- 264300 - B/STREAM UWL 8-LED WHITE 12M
- 264305 - B/STREAM UWL 8-LED WHITE 20M
- 264306 - B/STREAM UWL 8-LED BLUE 12M
- 264307 - B/STREAM UWL 8-LED BLUE 20M
- 264502 - B/STREAM UWL 8-LED RGB 12M
- 264503 - B/STREAM UWL 8-LED RGB 20M

FEATURES

- New Mounting Kit to fit inground vinyl pools
- Ideal for inground vinyl liner pools
- Available in White

DIMENSIONS

- Rim OD - 226mm
- Width - 84mm (Kit fitted with Light)

PRODUCT LITERATURE

For more information on the BriteStream LED Light, please refer to the Waterco Product Information Bulletin No PG32 – BriteStream LED Light.

WARRANTY

This unit is covered by a 12 month warranty against faulty materials and workmanship. Please refer to the detailed warranty booklet provided.

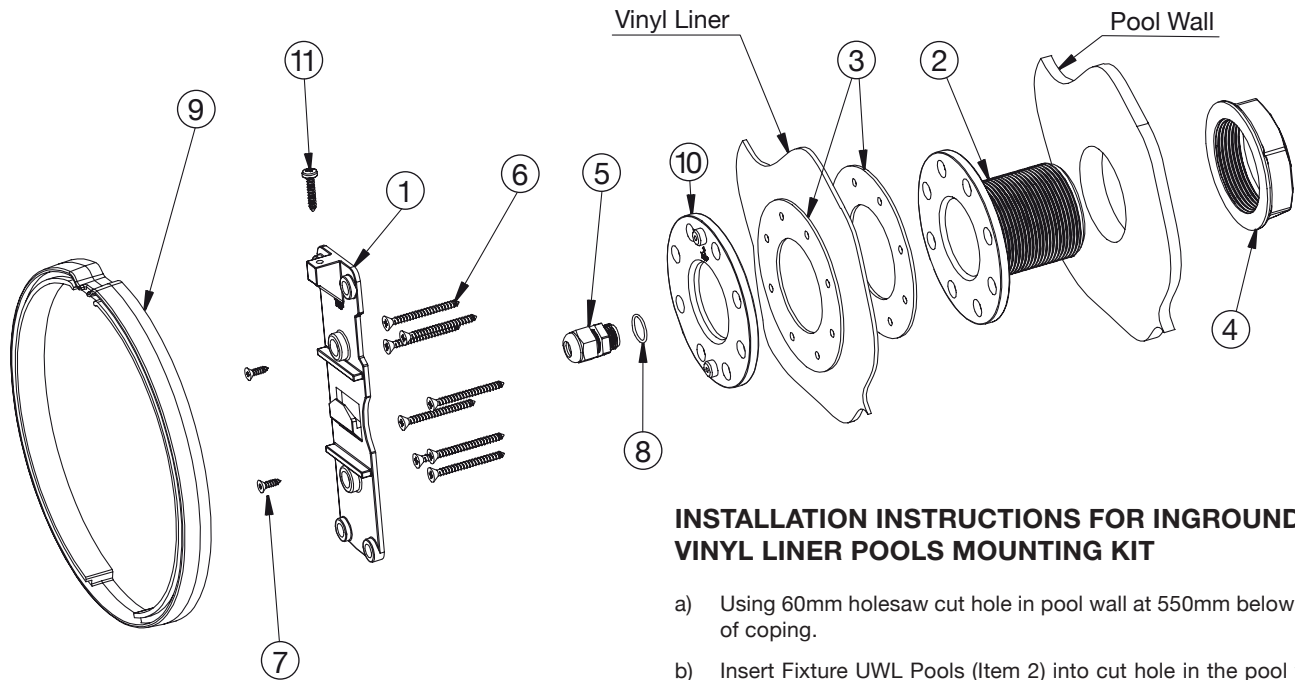
DISCLAIMER

Waterco takes no responsibility for Underwater Lights that are installed incorrectly or used beyond its intended purpose and specification.

Waterco has a policy of continuous research and development and reserves the right to amend without notice the specification and design of its products.

UWL Mounting Kit for Britestream Inground Vinyl Pools

Code No. 266020



INSTALLATION INSTRUCTIONS FOR INGROUND VINYL LINER POOLS MOUNTING KIT

- Using 60mm holesaw cut hole in pool wall at 550mm below top of coping.
- Insert Fixture UWL Pools (Item 2) into cut hole in the pool wall and tighten firmly with Back Nut (Item 4) but without applying undue force. Ensure that two bosses on the Face Plate (Item 10) will align vertically when mounted on to Fixture (Item 2).
- Remove adhesive protecting overlay from the rubber Gasket (Item 3) and affix to the face of the Mounting Fixture (Item 2) and ensure that 8 holes in the Gasket and in Mounting Fixture are aligned.
- After fitting Vinyl Liner into pool walls find and mark screw centre holes for attaching Face Plate.
- Remove adhesive protective overlay from second rubber Gasket (Item 3) and affix on to the back of the Face Plate (Item 10) with all holes aligned.
- Apply a thin layer of silicone adhesive to the other side of the rubber Gasket then align with marked screw centres and affix to the vinyl liner. Apply silicone adhesive on screw thread then screw it in to the pool wall.
- Feed cord through the Cable Gland (Item 5) leaving enough cord length for servicing and tighten gland nut by hand.
- Attach Mounting Bracket on to two bosses on Mounting Fixture and secure it with two supplied countersunk screws.
- Wind cord loosely around back of the light and catch it in clips.
- Fit light to Mounting Bracket by sliding the light down the wall until clip and hook engage. Fix light with screw at the top to Mounting Bracket.

| ITEM | QTY | PART NO. | DESCRIPTION |
|------|-----|----------|---------------------|
| 1 | 1 | 650020 | MOUNTING BRACKET |
| 2 | 1 | 650010 | FIXTURE UWL W POOLS |
| 3 | 2 | 650012 | GASKET |
| 4 | 1 | AC662 | BACK NUT |
| 5 | 1 | 650152 | CABLE GLAND |
| 6 | 8 | 6340823 | CSK SCREW 8G X 50MM |
| 7 | 2 | 6340822 | CSK SCREW 6G X 13 |
| 8 | 1 | 650153 | O RING 15 X 1.5 |
| 9 | 1 | 650097 | DRESS RING 18MM |
| 10 | 1 | 650011 | FACE PLATE |
| 11 | 1 | 65014 | S/S SCREW 10G X 5/8 |

WATERCO

Waterco Limited ABN 62 002 070 733

OFFICES - AUSTRALIA

NSW - Sydney
(HEAD OFFICE)
Tel : +61 2 9898 8600
VIC/ TAS - Melbourne
Tel : +61 3 9764 1211
WA - Perth
Tel : +61 8 9273 1900

QLD - Brisbane
Tel : +61 7 3299 9900
SA/ NT - Adelaide
Tel : +61 8 8244 6000
ACT Distributor
Tel : +61 2 6280 6476

OFFICES - OVERSEAS

Waterco USA
Augusta, USA
Tel : +1 706 793 7291
Waterco Canada
St-Hyacinthe, QC, Canada
Tel : +1 450 796 1421
Waterco (Europe) Limited
Sittingbourne, Kent. UK
Tel : +44(0) 1795 521 733

Waterco (NZ) Limited
Auckland, New Zealand
Tel : +64 9 525 7570

Waterco (C) Limited
Guangzhou, China
Tel : +8620 3222 2180

Waterco (Far East) Sdn. Bhd.
Selangor, Malaysia
Tel : +60 3 6145 6000

PT Waterco Indonesia
Jakarta, Indonesia
Tel : +62 21 4585 1481

Waterco International Pte Ltd
Singapore
Tel : +65 6344 2378